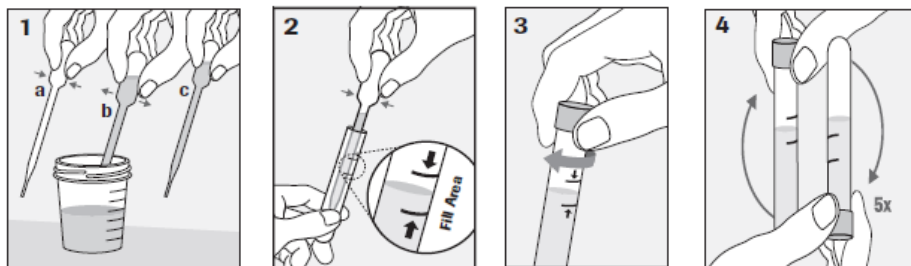


CHLAMYDIA TRACHOMATIS AND NEISSERIA GONORRHOEAE (U -CtGcNhO)

Do not urinate or wash your genital area for at least one hour before sample collection.

Sample collection:

- Do not wash your genital area. Wash your hands and open the sample cup without touching the inside of the cup.
- Urinate the first part of your urine into the cup. Keep urinating until there is 10 – 30 mls of urine in the cup. It is important to catch the urine starting from the first drops and not to collect more than 30 mls of urine. Pass the rest of the urine into the toilet.
- Transfer urine into the sample tube (Cobas® PCR Media) immediately. Open the cap of the tube. Keep the tube upright. Do not pour away the liquid inside the tube.



1. Squeeze the top part of the pipette, place the pipette tip into the urine and stop squeezing (a,b,c). Urine will flow into the pipette.
2. Release urine from the pipette into the sample tube (on top of the liquid) by squeezing the pipette again. Repeat until the urine amount is in between the marked lines.
3. Close the cap tightly.
4. Turn the tube upside down 5 times

- Write down your name, social security number (or date of birth) and the sample collection date on a sticker. Attach the sticker onto the side on the tube.
- Fill out the fields in this form. Deliver the sample tube and this form, on the sample collection day, to the laboratory which provided you with sample collection supplies.

Please fill in the following fields carefully:

Name _____

Social security number or date of birth: _____

Sample collection date: ____/____/____

Inquiries: